



Policy for the future:

Our Basic Environmental Management Policy states that, “Safeguarding the environment is the bedrock of all Group operational management.” We have therefore acted to prevent pollution and global warming and contribute to recycling. Through our initiatives, we have used biological resources properly to minimize the impacts of our operations on biodiversity and have sustainably reduced chemical and other discharges. We will continue striving to preserve biodiversity and respect the principles of the Convention on Biological Diversity by adhering to the following Biodiversity Action Guidelines, thereby transitioning nature positive world.

< Examples >

• Map of corporate activities and biodiversity

The Group surveyed its initiatives on biodiversity, the use of natural resources, and status of efforts to comply with the Cartagena Protocol both inside and outside of Japan. Additionally, the Group assessed the relationship between its business activities and biodiversity and identified issues through an analysis of the Group’s risks and opportunities.

• Ecological Footprint

We assess the ecological footprint (EF), an indicator of biodiversity, jointly with experts from the NGO Global Footprint Network, to examine all environmental burdens in the business activities of Group companies in Japan.

• Conservation for rare species of plants

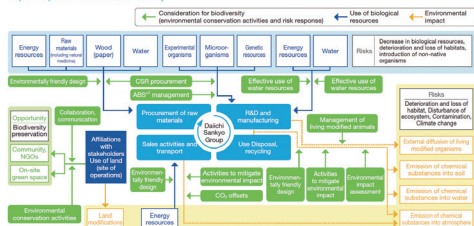
To preserve the golden orchid and the silver orchid, we have prohibited entry into the forested area of the property at the Tatebayashi Biopharmaceuticals Center where the plant naturally grows (approximately 1,000 m²). The continued conservation effort has been resulted in an increase in the population of the species and expansion of breeding range.



< Future outlook >

We will promote initiatives to contribute to transitioning nature positive world, including the analysis and disclosure in line with TNFD recommendations and the setting of targets for biodiversity conservation, the initiatives to contribute to 30by30, the implementation of programs to raise employee awareness and understanding of biodiversity.

Map of Corporate Activities and Biodiversity¹⁾



¹⁾ Prepared with reference to the "Map of Corporate Activities and Biodiversity" developed by the Japan Business Initiative for Conservation and Sustainable Use of Biodiversity (JIBS).
²⁾ Access to genetic resources and benefit sharing.

• Activities to nurture biodiversity

At our Pfaffenhofen Plant in Germany, we cooperate with Pfaffenhofen in Bloom -an initiative started by the city of Pfaffenhofen aimed to increase the pollinator population- and we are planting many flowers in the approximately 3,200 m² area on the plant premises as an environment where honeybees and other insects can inhabit.

