



## Policy for the future:

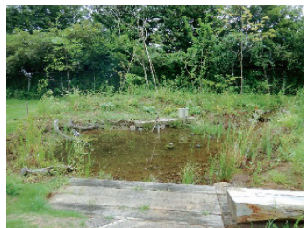
Toda Corporation has established “Toda Corporation Biodiversity Action Guidelines” and promoted measures to address biodiversity in order to ensure that each employee recognizes the importance of biodiversity and develop it into construction operations. With the aim of achieving a sustainable society in harmony with nature, we strive to preserve and regenerate biodiversity through construction operations, with a global perspective, while maintaining a good balance between the various activities of humans and the natural environment.

### ◆Utilizing Biotopes: Research on Ecological Network Formation and Native Plants.

Tsukuba Technical Research Institute continues biotope-based monitoring and research of on-site vegetation.

Biotopes prepared on the roofs of the facility have been identified as contributing to the formation of ecological networks that connect surrounding parks and forest areas, from the status of flying organisms.

Furthermore, we created a new biotope for nature restoration “Tsukuba Saisei no SATO” that uses local native plants endemic to Tsukuba where we research how to improve the biodiversity of the region.



Overview of Tsukuba Saisei no SATO



Transplantation of regional native plant  
traceability-certified planting plate

### ◆Conservation of ecosystems in disaster recovery work

During the ridge restoration work in Tsuya River banks, which was damaged by the Great East Japan Earthquake, we succeeded in large-scale mitigation of a unique environment, the salty marsh in the Brackish-Water Region.

Sixteen species of rare plants and Benthos registered on the Red List were identified and transplanted appropriately into newly made/regenerated wetlands to conserve them.



Transplantation of Benthos



Environmental education for elementary  
school students