

# MITSUI & CO., LTD.

<https://www.mitsui.com/jp/en/sustainability/contribution/environment/index.html#forest>

<https://www.mitsui.com/jp/en/sustainability/contribution/environment/forest/library/biodiversity/index.html>



## Policy for the future:

Of our company-owned forests “Mitsui’s Forests” (approximately 44,000 hectares), the areas with high significance from a biodiversity perspective (accounting for about 10% of “Mitsui’s Forests”) are categorized as Biodiversity Conservation Forests. They are further categorized in accordance with their qualities into Special Conservation Forests, Environmental Conservation Forests, Water and Soil Conservation Forests, and Cultural Conservation Forests. By setting out clear conservation purposes and conducting management appropriate to the characteristics of each category, we will grow forests in a way that are strongly oriented toward the preservation of biodiversity. While we work hard to protect biodiversity, we will make multiple uses of “Mitsui’s Forests” for comprehensive purposes, including environmental, social and economic.

### Balancing environmental preservation with the forest industry

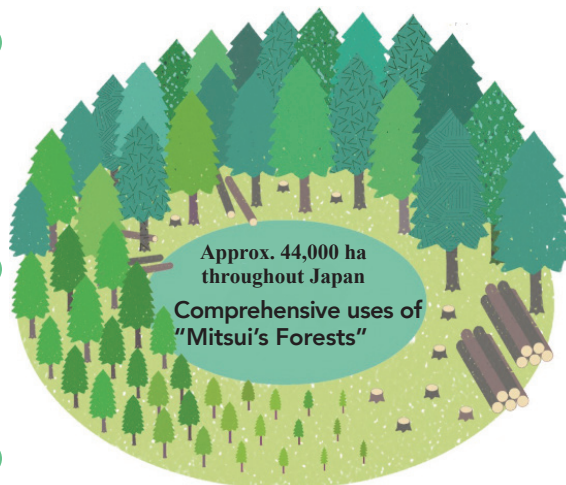
Work to build economically viable structure so that the profits generated are not only used in the cyclical management of forests, but can also be plowed back into cultivating natural forests and naturally regenerated forests.

### Production and stable supply of logs

Provide a stable supply of timber to meet approximately 0.1% (approximately 50,000 m<sup>3</sup>) of Japan’s annual demand

### Promoting use of wood biomass

Supply woody biomass fuel to the wood biomass power plants in Tomakomai City and Shimokawa Town in Hokkaido



### Carbon sink for mitigating global warming/ groundwater recharge

In addition to absorbing and storing CO<sub>2</sub>, about 30% of “Mitsui’s Forests” have been officially designated as headwater conservation forests that help to secure water resources and prevent flooding

### Environmental education through Mitsui’s forests

Provide opportunities to think about the connections between people and nature through forest experiences during which participants try thinning out the forests and other activities

### Linking preservation of the forests to the preservation of regional culture and traditions

Value the role of forests in nurturing human culture; conserve and encourage Ainu culture, and provide ongoing support for Kyoto’s traditional events

● Economy   ● Environment   ● Social