



Policy for the future:

Hitachi established long-term environment targets called Hitachi Environmental Innovation 2050 in September 2016 for a management strategy in response to global demands for a reduced environmental burden. We have aimed to realize “Low Carbon Society”, “Resource Efficient Society” and “Harmonized Society with Nature” toward 2030 and 2050.

Regarding Harmonized Society with Nature, we established the target for “Minimized impact on natural capital”, and in accord with it we classified our businesses into negative or positive impacts on natural capital and are advancing initiatives to reduce our negative impact and further create our positive impact.

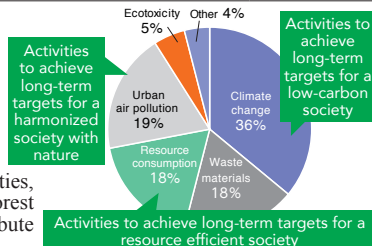
1. Long-term environment targets “Hitachi Environmental Innovation 2050”



2. Initiatives to Minimize Impact on Natural Capital

For a reduced negative impact, we are further advancing our activities to reduce environmental burden including an increase in the energy efficiency of our products and services, factory efficiency, effective utilization of resources and reduction of chemical substances.

Additionally as for our increasing positive impact activities, we are advancing the social contribution activities like forest conservation and the business activities that directly contribute to ecosystem preservation.



Negative Impact on Natural Capital (FY 2018)
Note: Calculated using version 2 of the Life-cycle Impact Assessment Method based on Endpoint Modeling (LIME2).

< Promoting Ecosystem Preservation >

Tree-Planting Activities at Business Sites Outside Japan (Systems & Services Business, Hitachi, Ltd.)

Hitachi Computer Products (America) has been engaging in afforestation as environmental volunteer activities that employee have led. They planted four hundred fruit tree saplings on their grounds in 2018, and the total area have covered by planted tree to Approximately 15 Acres (approximately 60000 m²).



Trees and wildflowers growing on the grounds

Forest Maintenance Activities to Conserve Tokyo's Water Resources (Water & Environment Business Unit, Hitachi, Ltd.)

For the purpose of providing safety and high-quality of water, we have helped maintain the 3.19 hectares in Kosyu city, Yamanashi where is the part of water conservation forests providing water to the Tokyo area.

We also named the Water Resources Forest “Kinopon” and have been advancing the forest maintenance activities.

Employees participated forest maintenance activities

