



Policy for the future:

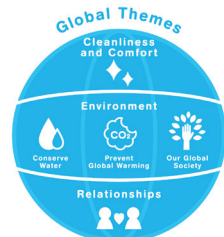
TOTO Group has placed the environmental problems distinctly as an issue to be resolved through the business, and have also established Global Environmental Policy to contribute in creating a sustainable society. Through conducting business activities in line with the policy, we take care to preserve biodiversity, and a sustainable use of them. In addition, we promise to avoid any activities that may lead to the extinction of endangered species.

< Message for society >

[TOTO Global Environmental Vision]

Coinciding with the implementation of our mid-term management plan, TOTO WILL2022, the TOTO Global Environmental Vision was revised and put into effect in April 2018. This vision acts as a driving force for TOTO WILL2022. By strengthening the promotion of this vision, we are aiming to further integrate our management and CSR activities and increase our corporate value.

In this vision, we specified three themes, Cleanliness and Comfort, Environment, and Relationships. These each themes have key initiatives, specific indicators and targets determined based on our aims. We are working toward achieving these targets by fiscal 2022. Through activities centered on these three themes, we will also contribute to the achievement of the Sustainable Development Goals (SDGs) set by the United Nations in 2015.



< Examples >

[Preserving the Water Environment] - TOTO Water Environment Fund

TOTO strives to preserve water environments such as rivers and oceans. Through the TOTO Water Environment Fund, established in 2005, we provide support to various organizations engaged in such activities as protecting water sources, water quality, and biodiversity. In addition, we encourage our employees to participate as volunteers in these activities as well as in activities organized by local community members.



[Biodiversity-conscious Procurement]

We established the Standards for Sustainable Procurement of Raw Materials. These standards define important items for consideration when procuring earth and stone materials which are the raw materials used in our main products, and wood materials.

As for our raw materials, we are conducting questionnaires and interviews with all supplier mines. As a result of such efforts, we were able to confirm that all of our supplier mines were compatible with our standards.



Also, we had established the usage rate of legal or recycled materials for wood-based materials in products as an important index. It has been maintained 100%.

