

Nissui Corporation

<https://nissui.disclosure.site/en/themes/87>
<https://nissui.disclosure.site/en/themes/89>
<https://nissui.disclosure.site/en/themes/141>

87



89



141

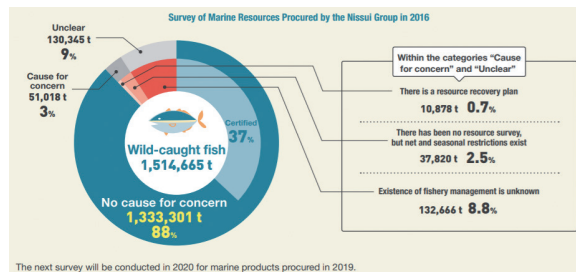


Policy for the future:

Nissui Group believe it is imperative to conduct periodic surveys and take appropriate action issues, to the marine resources we procure and use. By continually responding to individual issues, we aim to ensure that the marine products procured by the Nissui Group are sustainable by the year 2030. As we move toward realization of a sustainable aquaculture business, we acquire marine eco-label certifications. In addition, to reduce the negative impact on the environment caused by increasing aquaculture scale, we experiment with land-based aquaculture and work actively to develop other new technologies. We also engage in activities to preserve biodiversity in the natural environment surrounding the business locations.

< The Survey of Procured Marine Resources Sustainability >

We conducted a survey of resources at its Group companies (28 domestic and 16 overseas companies) based on the dealings and results of wild-caught fish for 2016. And the results showed that 88% of procured wild-caught fish resources were either certified with a marine eco-label such as MSC, or biologically sustainable, and thus were classified as “no cause for concern.” For the remaining resources in the categories “cause for concern” and “unclear,” further investigations have carried out after 2018, including checking whether species are endangered, whether their fisheries are managed, and whether there are resource recovery plans. For some fish species classified as “cause for concern,” we taken steps like establishing a policy for future management. In order to confirm the resource situation of these “unclear” fish species, we are gathering information from various administrative agencies, groups, and researchers, and examining the possibility of partnerships through FIPs (Fishery Improvement Projects), etc.



< Preservation of the “forest, river and sea” >

In order to sustainably utilize marine resources, efforts to maintain the health of the sea itself and to aid its recovery, as well as resource management, are essential. So we are engaged in preservation activities that take a holistic approach to the “forest, river and sea.” On October 30, 2018, Tottori Prefecture*, Kotoura Town and Nissui entered into a forest preservation and management agreement in order to preserve the surrounding 5.933 hectares of forest as the “The forest that protects spring water nurturing fish and the sea.”

*Tottori Prefecture is the home of the Nissui Group companies Yumigahama Suisan Co., Ltd., which is engaged in the aquaculture and processing businesses and Kyowa Suisan Co., Ltd., a fishery company.

