



Policy for the future:

The Fujitsu General Group recognizes that our business activities are benefited from and also affect biodiversity, and strives to preserve it and use it sustainably.

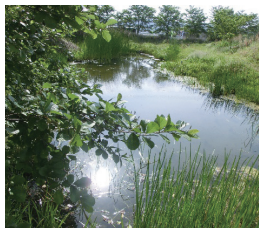
To that end, we analyze and evaluate the impact on biodiversity at all stages of our business activities and reduce the impact on biodiversity throughout the life cycle of our products and services, thereby preserving and sustaining biodiversity. Through our group's technologies, know-how on biodiversity initiatives through its own business activities, and social contribution activities, we will contribute to preserve and sustainably use biodiversity for our customers and society as a whole.

Examples

Establishment of ecosystem network with biotope

Hamamatsu Business Office opened a biotope in the green area of the premises in FY2012 and are maintaining it. In the biotope, Yaritanago (*Tanakia lanceolata*) and Matsukasagai (*Pronodularia japonensis*) which are rare species designated as endangered species IA (Note 1) in the Shizuoka Prefecture RDB are conserved and at present, the natural breeding is confirmed. There are many other animals and plants including Minamimedaka (*Oryzias latipes* or Japanese rice fish, semi-endangered species in Shizuoka Prefecture RDB), Shirobanasakuratade (*Persicaria japonica*), Higanbana (*Lycoris radiata* or red spider lily) inhabiting and growing.

(Note 1):Species with extremely high risk of extinction in the near future in the wild



Biotope at Hamamatsu Business Office

Rare plants conservation activity

Kawasaki Head Office is working on the biodiversity conservation by protecting and cultivating local rare plants. In collaboration with the "Eco-city Takatsu" promotion project sponsored by Takatsu-ku, Kawasaki City, we evacuated Ebine (*Calanthe discolor*), species of orchid, which is rare plant endangered to be stolen, from the forest of Kawasaki City, and are conserving and cultivating in the premises of Kawasaki head office with the advice of expert.

In the future, as soon as the proliferation of the Ebine is confirmed, we will continue to contribute to the local society by returning them to the forest where the Ebine inhabit.



Ebine growing with expert advice in the premises of Kawasaki Head Office

