



## Policy for the future:

Focusing on our group environmental vision “SHIMZ Beyond Zero 2050” that aiming zero carbon, zero final waste disposal, zero negative impact on nature at 2050, in the Group Medium-Term Management Plan <2024-2026>, we have set a KPI of achieving a 100% “Environmental KY”, an analysis of the natural environment at each construction sites.

We will promote efforts to address nature-related issues in our supply chains, and we conduct research and development of construction methods and technologies and business creation that contribute to nature-positive. We will report progress on these through TNFD information disclosure, etc.



an analysis of the natural environment

### Environmental KY 100%

“Environmental KY” is nature-related assessment initiatives at construction sites from the pre-order stage. It make early risk prediction of damage to nature and opportunity prediction of regenerating and creating nature, this is in line with mitigation hierarchy principles.



### sustainable society with **Green Infrastructure +** (PLUS)

PLUS means Philosophy of Livable Universe for Sustainability. Developing GI+ will return the sustainable blessings of nature to the society. Through Forest of Regeneration Biotope, OEMC site, we provide opportunities for environmental education and contribute to nature-positive through our services.



### **ZERO** uncertified foreign plywood used during concrete pouring

Formwork plywood used during concrete pouring was identified as one of the important nature-related issues. We have set a goal of eliminating the use of uncertified foreign plywood by 2030, and are promoting initiatives such as information sharing and opinion exchange among related parties, and new product development.



### Wetland restoration of fallow rice fields “Yatsubori no shimizu yatsu valley”, is a demonstration and knowledge development field

We aim to establish technologies and knowledge that contribute to nature positive.

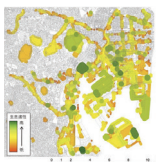
We collaborate with a variety of stakeholders and explore “new relationships between people and nature” beyond farming. We are developing monitoring-system using digital technology and disaster prevention and mitigation technology using NbS.



### By 2030, **Final disposal** rate **3.0%** **Plastic** waste final disposal rate under **15%**

By-products are an important downstream issue in construction projects.

The entire company works together to promote 4R activities -Refuse, Reduce, Reuse, and Recycle. Targets have also been set for the difficult issue of plastic waste.



### simulation system of the ecosystem network in an area **UE-Net®** helps create nature

From high-resolution satellite images it extract and classify urban greenery to several environment types such as grassland, forest, or waterside. And it makes high-resolution map of habitat suitability for living things. We contribute to the creation of nature primarily in urban areas through support for green space planning.